

AEV Series Automatic Air Vent Valves



Description

The **HYDAC** Air Vent Valve eliminates air bubbles which accumulate in hydraulic systems immediately after start-up or after long periods of shut-down of the system.

The Air Vent Valve remains open until the valve reaches a 45 psi differential pressure.

Pressure must be maintained above 45 psi to keep valve closed

This type of operation of the **HYDAC** Air Vent Valve allows for easy start-up of hydraulic systems.

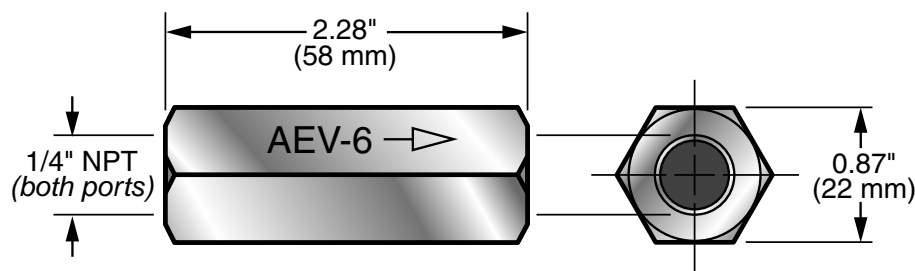
Due to the compact design the Air Vent Valve requires minimum space.

Mounting

The inlet port is connected to the pressure line and the outlet port should be connected back into the non-pressurized reservoir.

For ventilation of pumps the valve should be mounted adjacent to the pump outlet. For system ventilation the valve should be mounted at the system's highest point.

Dimensions



Model Code

Automatic Air Vent Valve

AEV

Size

6

Type of Connection

5

= NPT Threaded Connection

AEV - 6 / 5

Part Number: 00230223

Technical Data

Operating Pressure Range:

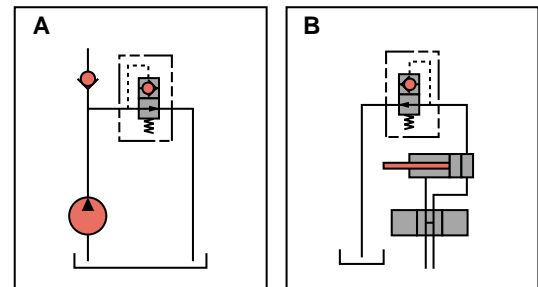
P min 43 psi (3 bar)
P max 8700 psi (600 bar)

Operating Flow Range:

Q min 0.25 gpm (1 l/min)
Q max 15 gpm (57 l/min)
to achieve higher flow rates,
parallel connection is possible

Mounting Positions

Optional—see figures A and B. The return line must be connected to reservoir below the minimum oil level.



Dimensions are for general information only, all critical dimensions should be verified by requesting a certified print.